

Tool grinding

Rocker **A2**



RIEGGER

WIR SORGEN FÜR DEN RICHTIGEN SCHLIFF



Increased performance

Maximum edge stability

Rocker **A2**

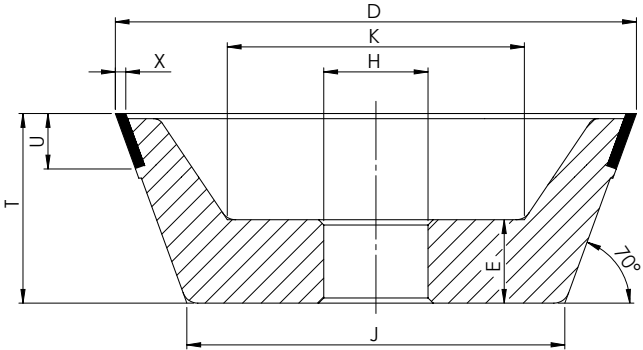


Rocker A2 cup grinding wheels have been specially developed to meet the requirements for grinding carbide tools. Maximum edge stability extends the service life of Rocker grinding wheels by up to 40% for machining the periphery and face of rotationally symmetric tools..

This is reflected in low setup costs and higher process stability. The performance and quality of Rocker cup grinding wheels is sure to impress in the grinding of lateral and face surfaces, sharpening, corner radii or step transitions.

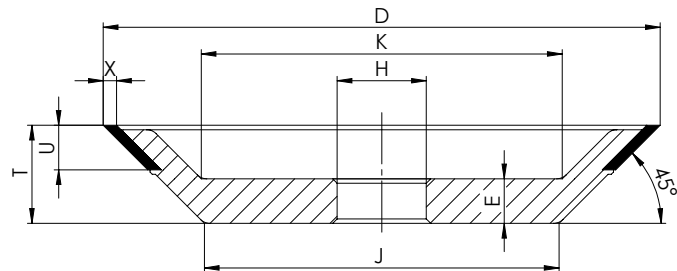
Recommended specifications for the Rocker A2:

Bond	Grit size	Shape	D	U	X	E	T
Rocker A2	D46 D54	6A9	75	3 - 15	3 6	10	X +20
			100				
			125				
	D46 D54	11V9	75	10	3 5	10	30
			100			12	36
			125			16	40
		12V9	75	3 - 15	2 3	10	22
			100				22
			125				22

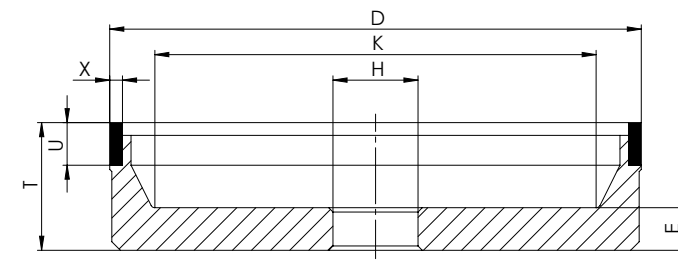


11V9 ROCKER

12V9 ROCKER



6A9 ROCKER



We provide the

right finish

Please feel free to contact us for more information about our products.

Simply use email: abz@riegger-diamant.de

Rocker A2 tool grinding

Version 2020.1


RIEGGER Diamantwerkzeuge GmbH

Daimlerstraße 7-9 71563 Affalterbach Germany

info@riegger-diamant.de www.riegger-diamant.com

RIEGGER

WIR SORGEN FÜR DEN RICHTIGEN SCHLIFF